

THE TOURIST ATTRACTION OF THE MORAVIAN KARST



- *I WOULD LIKE TO OFFER MY TOPIC WHICH I CHOSE ON THE PRACTICAL LEAVING EXAM. 😊*

We can visit :

- *PUNKEVNI CAVE*
- *CASTLE BLANSKO*
- *JEWISH GHETTO*
- *CASTLE BOSKOVICE*
- *WESTERN TOWN BOSKOVICE*
- *SYNAGOGUE MAIOR*
- *CASTLE LYSICE*

PUNKEVNI CAVE



CASTLE BLANSKO



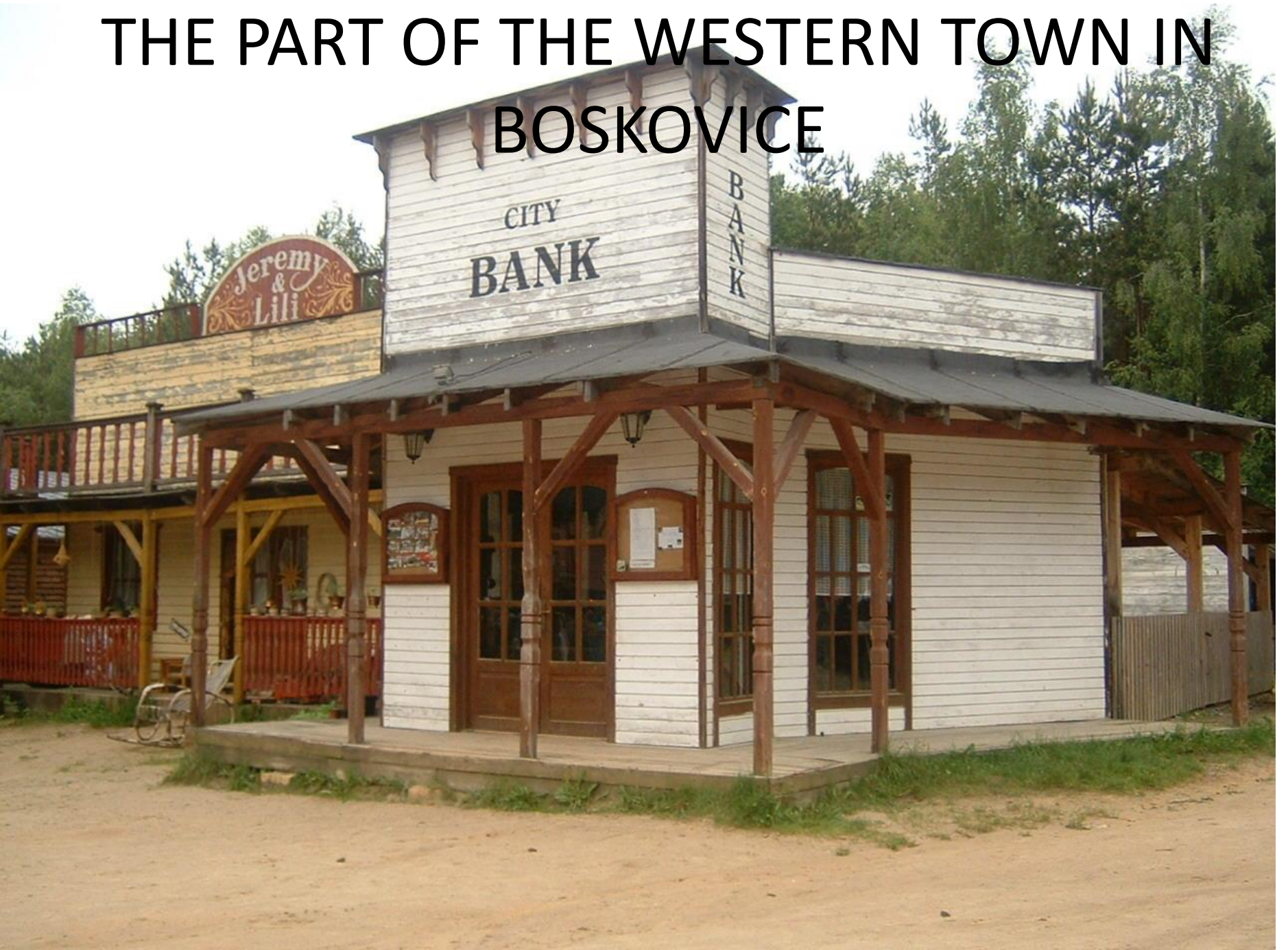
JEWISH GHETTO BOSKOVICE



CASTLE BOSKOVICE



THE PART OF THE WESTERN TOWN IN BOSKOVICE



SYNAGOGUE MAIOR



CASTLE LYSICE



- **Moravian Karst** is one of the most important karst area of Central Europe. In the area of Moravian Karst, there are more than 1100 caverns and gorges. But only 4 caves of the all number are open to public. There are Punkva Caves with their underground river – during the cruise you can see there the bottom of the famous Macocha Abyss. Another cave is Catherine's Cave with its unique limestone columns. The Balcarka Cave is full of colorful stalactitic decoration. Sloup-Šošůvka Caves are made by huge corridors and underground gorges.

- Famous **Macocha Abyss** is more than 138 m deep and it is the biggest gorge of its kind in the Czech Republic and even in the Central Europe. The upper part of this nature unique is about 174 m long and 76 m wide. There are two platforms for tourists at the edges. The first one is Upper Bridge constructed in 1882. The second one is little bit lower called Lower Bridge. This lower bridge comes from 1899 and it is about 92 m above the bottom of Macocha that you can see from there.



THANK YOU FOR YOUR ATTENTION

- *Made by: Vladimíra Dušková, 4.A* 😊 😊

Thank you for a best time in Austria.

